

Dual SCR Power Modules are designed for use in power electronic circuits and equipment under normal operating conditions.

KEY PARAMETERS

U_{DRM}, U_{RRM}	up to 1600 V
$I_{T(AV)}$	170 A
I_{TSM}	5000 A
du/dt^*	1000 V/ μ s
di/dt	100 A/ μ s

* maximum (non standard) value



Outline

See package details for further information

APPLICATION

- High Voltage Power Supplies
- Motor Control

FEATURES

- electrically isolated base
- high current capabilities
- high surge current capabilities
- high rates voltages
- low thermal impedance (Aluminium Nitride Insulators)
- tested according to IEC standards
- compact size and small weight

Designed for use in high power industrial and commercial power electronic circuits and equipment where high currents are encountered and high reliability is essential.

ORDERING INFORMATION

When ordering please refer to device code builder presented below. Please use the complete part number when ordering, quote or in any future correspondence relating to your order.

MT <input type="text"/> -170- <input type="text"/> <input type="text"/> - <input type="text"/> 0	du/dt (see table)
_____	Voltage class (hundred volts)
_____	Elements configuration (see drawings)

MT_-170 Dual SCR Power Module



KKMTx170, August 2009 version

ELECTRICAL PARAMETERS

Voltage ratings

Voltage class	U_{RRM}	U_{RSM}	I_{RRM}
	V	V	mA
04	400	500	20
06	600	700	
08	800	900	
10	1000	1100	
12	1200	1300	
14	1400	1500	
16	1600	1700	

du/dt group codes

Group code	du/dt
	V/ μ s
0	no specified value
5	320
6	500
7	1000

Zakłady Elektronowe LAMINA S.A.
Puławska 34
PL-05-500 Piaseczno
POLAND

Tel.: +48-22-7572731
Tel.: +48-22-3989409
Fax: +48-22-7500884
e-mail: sekretariat@lamina.com.pl
www.lamina.com.pl

MT_-170 Dual SCR Power Module



KKMTx170, August 2009 version

Electrical properties

Parameter	Unit	Test conditions	Value
Average on-state current	$I_{T(AV)}$	A	170
Case temperature	T_c	°C	85
RMS on-state current	$I_{T(RMS)}$	A	267
Surge current	I_{TSM}	A	$T_j=125^\circ\text{C}$, $U_R=0,8U_{RRM}$, $t_p=10\text{ms}$
I^2t – value	I^2t	kA^2s	125
On-state voltage max.	U_{TM}	V	$T_j=25^\circ\text{C}$, $I_{TM}=625\text{A}$
Threshold voltage	$U_{T(T0)}$	V	0,83
Slope resistance	r_T	$\text{m}\Omega$	1,035
Latching current	I_l	mA	$T_j=25^\circ\text{C}$, $U_D=12\text{V}$
Holding current	I_H	mA	$T_j=25^\circ\text{C}$, $U_D=12\text{V}$
Circuit commutated turn-off time (typical)	t_q	μs	$T_j=125^\circ\text{C}$, $I_{TM}=150\text{A}$, $di_R/dt=12,5\text{A}/\mu\text{s}$, $du/dt=20\text{V}/\mu\text{s}$, $U_D=0,67U_{DRM}$, $U_{RM}=100\text{V}$
Turn-On time (typical)	t_{gt}	μs	$I_{TM}=100\text{A}$, $U_{DM}=100\text{V}$
Rate of rise of on-state current-repetitive	di/dt	$\text{A}/\mu\text{s}$	$T_j=125^\circ\text{C}$, $I_{TM}=3I_{T(AV)}$, $U_D=0,67U_{DRM}$, $f=50\text{Hz}$, $I_{GM}=1\text{A}$, $di_G/dt=1\text{A}/\mu\text{s}$
Critical rate of raise of off-state voltage	du/dt	$\text{V}/\mu\text{s}$	$T_j=125^\circ\text{C}$, $U_D=0,67U_{DRM}$
Gate current to trigger	I_{GT}	mA	$T_j=25^\circ\text{C}$, $U_D=12\text{V}$
Gate voltage to trigger	U_{GT}	V	$T_j=25^\circ\text{C}$, $U_D=12\text{V}$
RMS isolation voltage	U_{isol}	V	1s, circuit to base, all terminals shorted

Thermal properties

Parameter	Unit	Test conditions	Value
Thermal resistance, junction to case per thyristor/module	R_{thJC}	°C/W	DC
Thermal resistance, case to heatsink per thyristor/module	R_{thCh}	°C/W	
Operating junction temperature	$T_{jmin} \dots T_{jmax}$	°C	
Storage temperature	T_{stg}	°C	

Zakłady Elektronowe LAMINA S.A.
Puławska 34
PL-05-500 Piaseczno
POLAND

Tel.: +48-22-7572731
Tel.: +48-22-3989409
Fax: +48-22-7500884
e-mail: sekretariat@lamina.com.pl
www.lamina.com.pl

MT_-170 Dual SCR Power Module

KKMTx170, August 2009 version

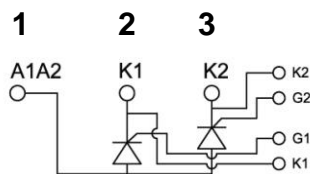
Mechanical properties

Parameter		Unit	Value
Mounting torque (M6)	M1	Nm	6,00 ±15%
Terminal connection torque (M6)	M2	Nm	6,00 ±15%
Weight	M	g	360

Cofigurations

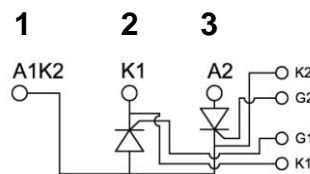
MTA

Terminal number:



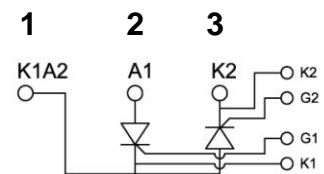
MTC

Terminal number:



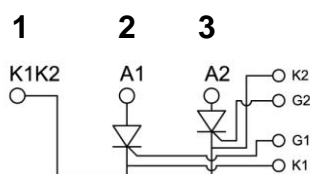
MTE

Terminal number:



MTK

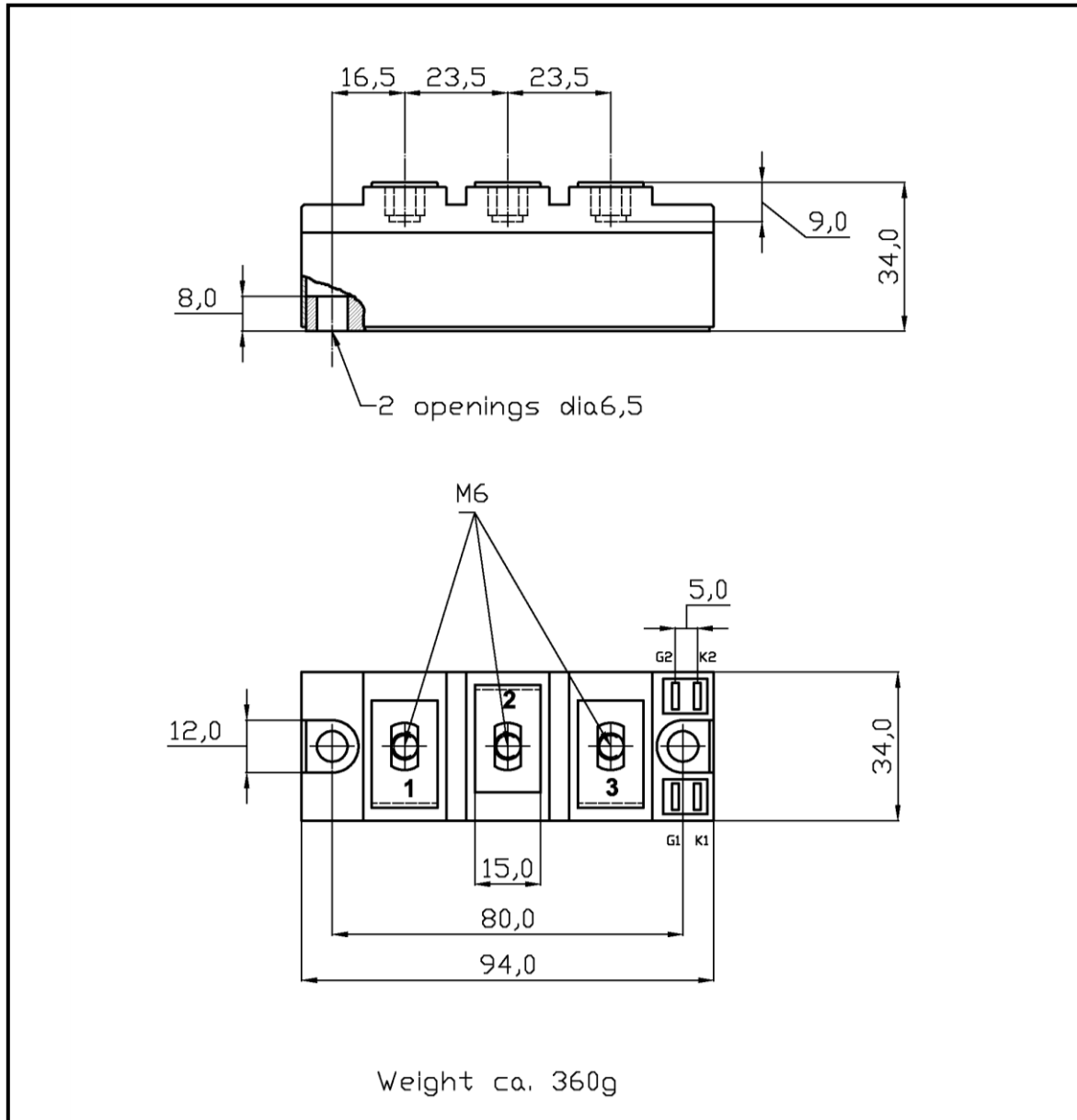
Terminal number:



MT_-170 Dual SCR Power Module

KKMTx170, August 2009 version

Package details

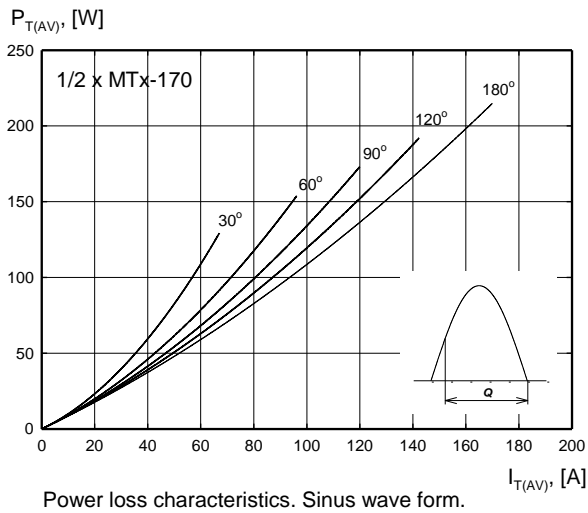


For further package information, please contact Sales & Marketing Department. All dimensions in mm, unless stated otherwise.
Do not scale.

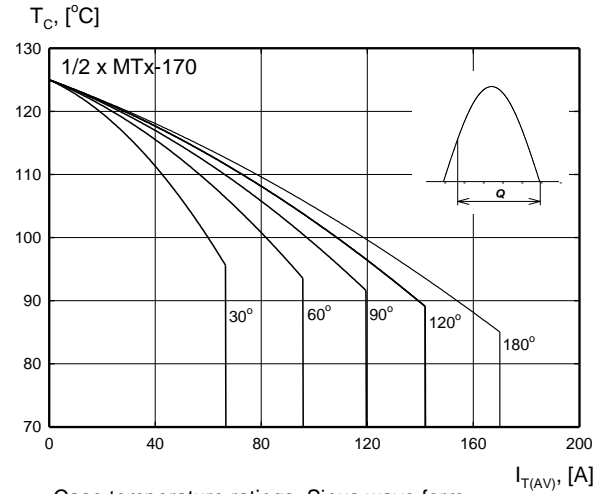
MT_-170 Dual SCR Power Module

KKMTx170, August 2009 version

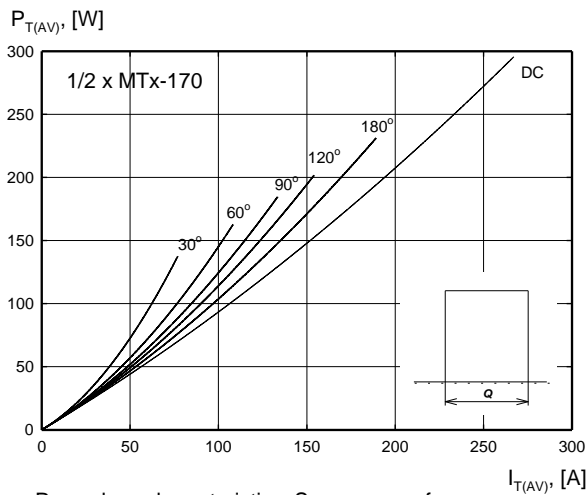
CHARACTERISTICS



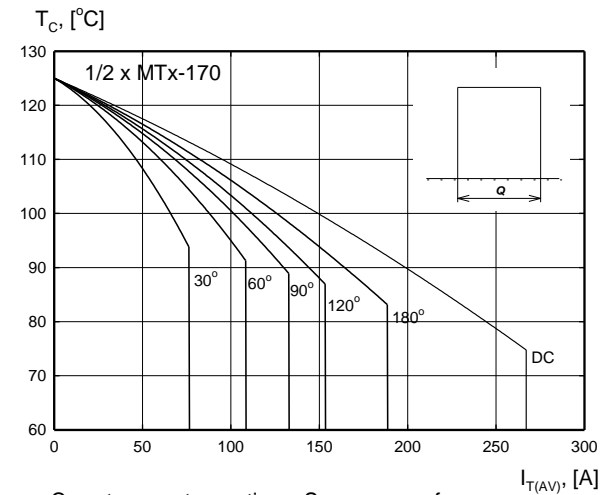
Power loss characteristics. Sinus wave form.



Case temperature ratings. Sinus wave form.



Power loss characteristics. Square wave form.

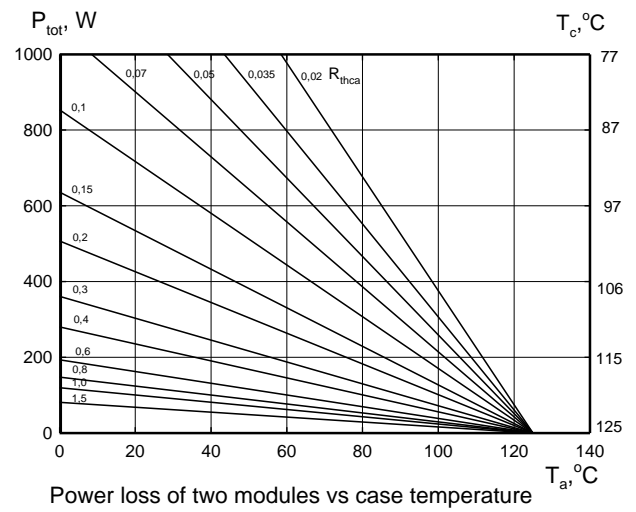
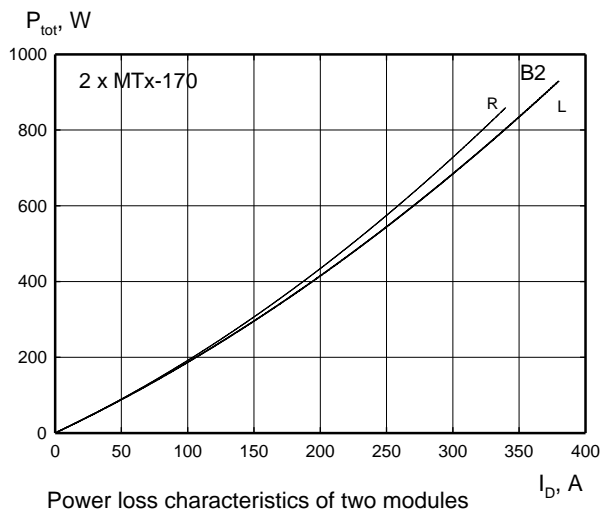
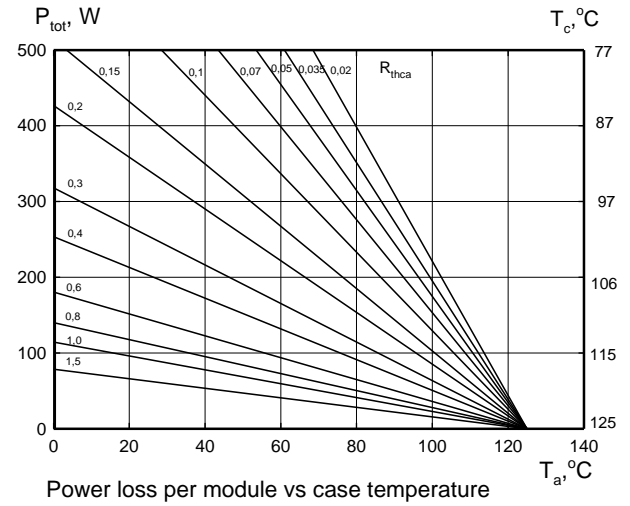
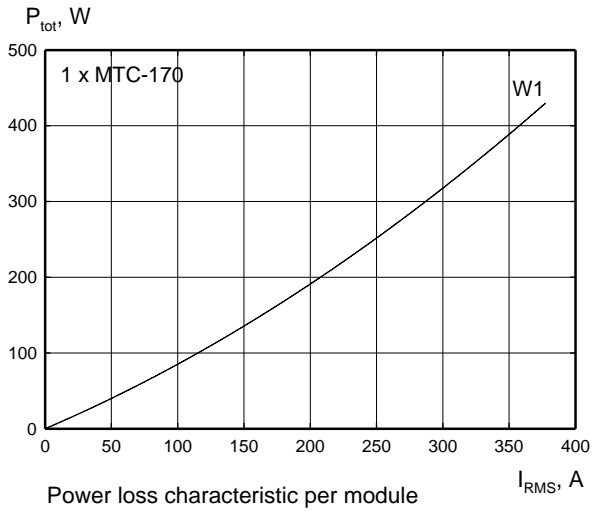


Case temperature ratings. Square wave form.

MT_-170 Dual SCR Power Module



KKMTx170, August 2009 version

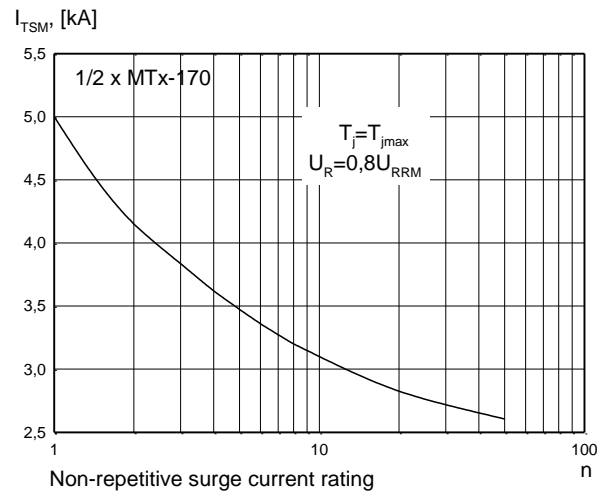
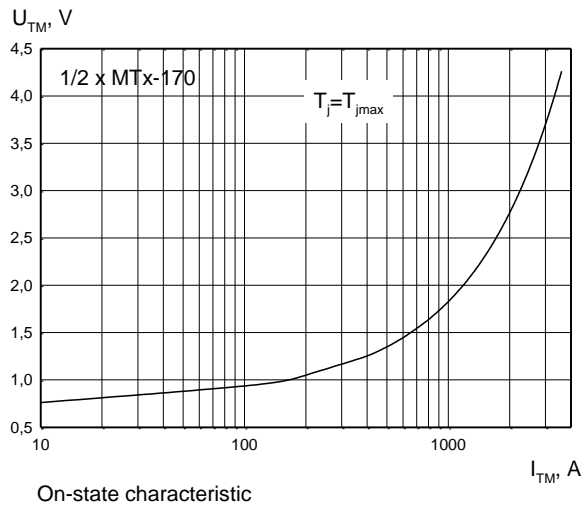
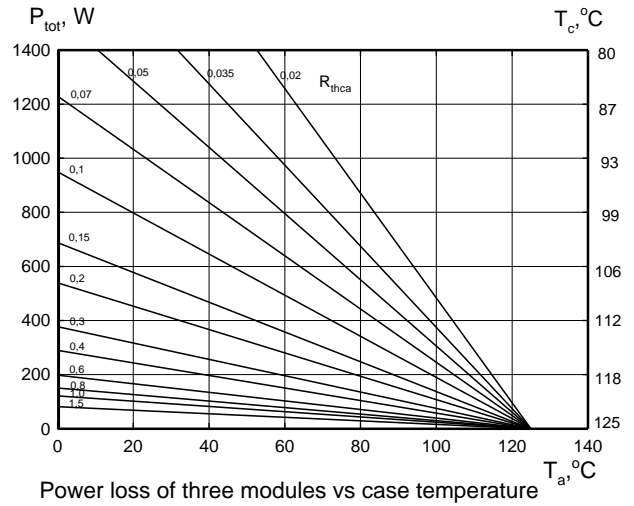
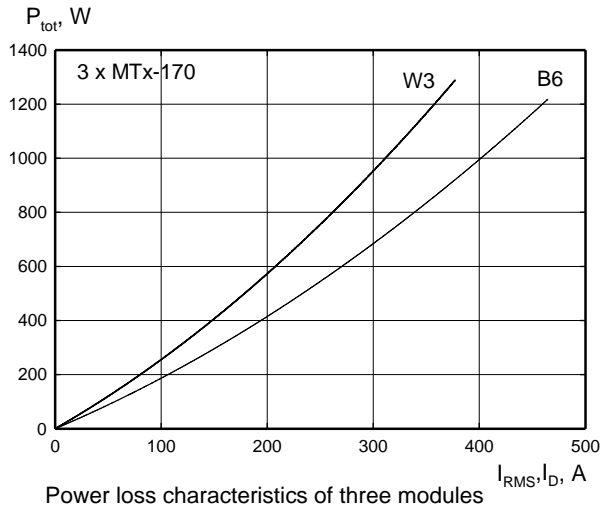


Zakłady Elektronowe LAMINA S.A.
Puławska 34
PL-05-500 Piaseczno
POLAND

Tel.: +48-22-7572731
Tel.: +48-22-3989409
Fax: +48-22-7500884
e-mail: sekretariat@lamina.com.pl
www.lamina.com.pl

MT_-170 Dual SCR Power Module

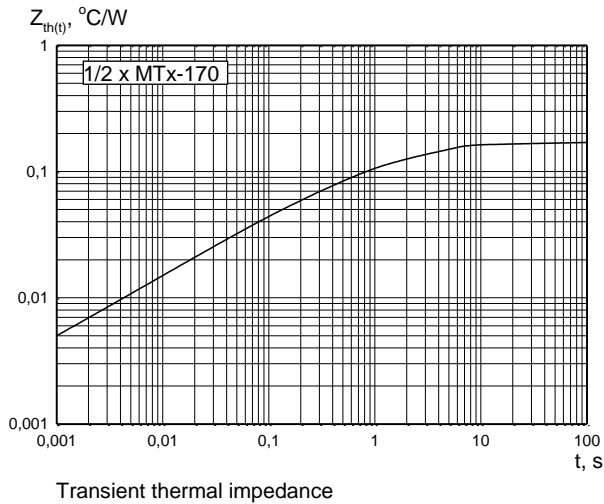
KKMTx170, August 2009 version



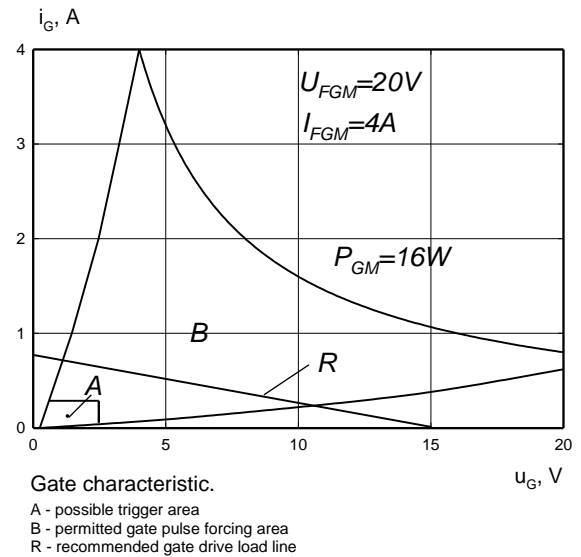
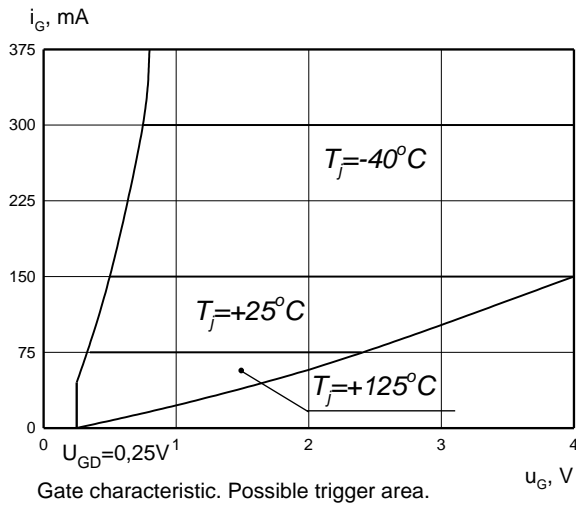
MT_-170 Dual SCR Power Module



KKMTx170, August 2009 version



Gate characteristics



Zakłady Elektronowe LAMINA S.A.
 Puławska 34
 PL-05-500 Piaseczno
 POLAND

Tel.: +48-22-7572731
 Tel.: +48-22-3989409
 Fax: +48-22-7500884
 e-mail: sekretariat@lamina.com.pl
 www.lamina.com.pl

MT_-170 Dual SCR Power Module



KKMTx170, August 2009 version

HEATSINKS

ZE LAMINA S.A. has its own proprietary range of extruded aluminium heatsinks designed to optimise the performance of our semiconductors with natural and forced air flow.

POWER ASSEMBLY CAPABILITY

ZE LAMINA S.A. provides a support for those customers requiring more than a basic semiconductor and offers precisely assembled Power Blocks according to factory or customer standards.

Zakłady Elektronowe LAMINA S.A.
Puławska 34
PL-05-500 Piaseczno
POLAND

Tel.: +48-22-7572731
Tel.: +48-22-3989409
Fax: +48-22-7500884
e-mail: sekretariat@lamina.com.pl
www.lamina.com.pl